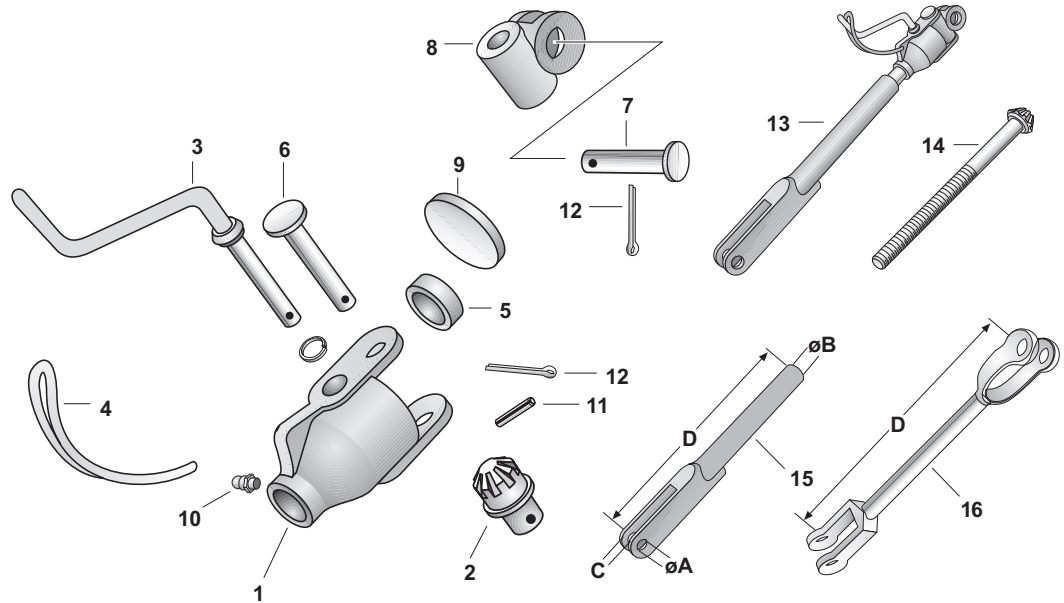
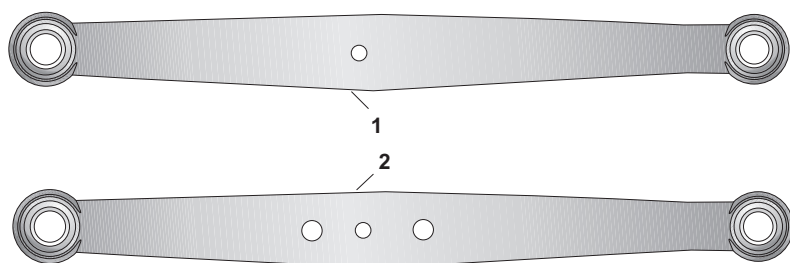


## Leveling Boxes and Related Components

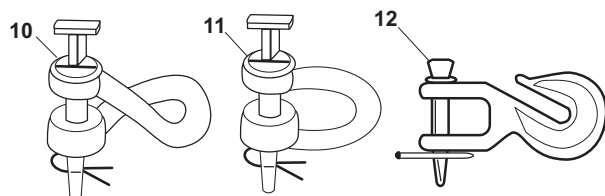
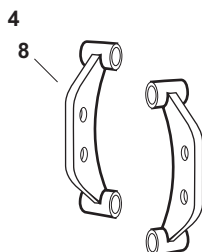
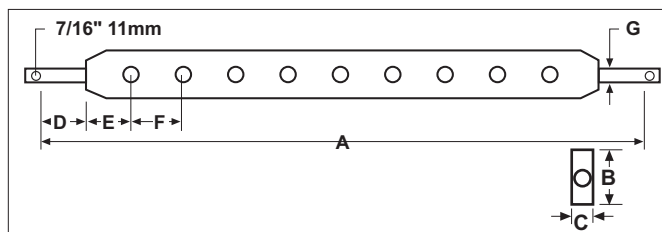
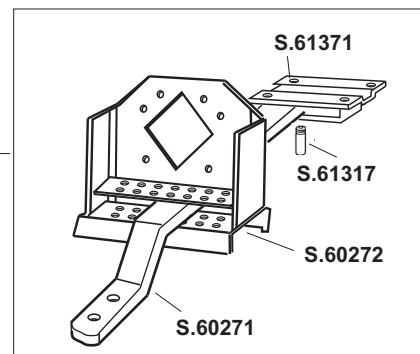
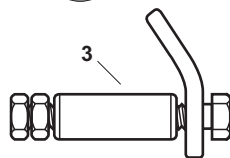
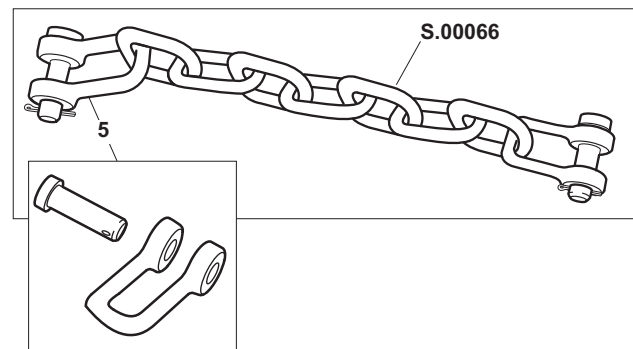


[ricksagriparts@gmail.com](mailto:ricksagriparts@gmail.com)

	OUR #	DESCRIPTION	EQUIVALENT	TRACTOR MODEL
1	R00539	Leveling Box Housing (3/4")	181344M2 193181M1	TEA20, TED20, TEF20, TO20, TO30, TO35, FE35, F40
2	R00240	Gear - w/ Washer & Pin	181345M1	TEA20, TED20, TEF20, TO20, TO30, TO35, FE35, F40
3	R00225	Leveling Handle	181349M1 1662382M1	TEA20, TED20, TEF20, TO20, TO30, TO35, FE35, F40
4	R00536	Retaining Clip - Leveling Handle	193092M1	TEA20, TED20, TEF20, TO20, TO30, TO35, FE35, F40
5	R00537	Thrust Bearing (3/4")	195457M1	TEA20, TED20, TEF20, TO20, TO30, TO35, FE35, F40
6	R01640	Lower Clevis Pin (5/8" Dia)	376399X1	TEA20, TED20, TEF20, TO20, TO30, TO35, FE35, F40
7	R01640	Upper Clevis Pin (5/8" Dia)	376399X1	TEA20, TED20, TEF20, TO20, TO30, TO35, FE35, F40
8	R01796	Knuckle	1884376M1	TEA20, TED20, TEF20, TO20, TO30, TO35, FE35, F40
9	R00538	Core Plug (1 3/4")	195644M1	TEA20, TED20, TEF20, TO20, TO30, TO35, FE35, F40
10	R00821	Grease Nipple (1/4" UNF Straight)	200191M1	TEA20, TED20, TEF20, TO20, TO30, TO35, FE35, F40
11	R01115	Roll Pin (3/16" x 3/4")	195648M1	TEA20, TED20, TEF20, TO20, TO30, TO35, FE35, F40
12	R01501	Split Pin (4mm x 68mm)	354068X1	TEA20, TED20, TEF20, TO20, TO30, TO35, FE35, F40
13	R16768	Leveling Box - Includes: R00235 x 1, R00389 x 1	354068X1	TE20, TEA20, TEF20, TO20, TO30
13	R00575	Leveling Box - Includes: R00237 x 1, R00392 x 1	354068X1	TO35, FE35, F40
14	R00235	Shaft (14" x 3/4")	181346M1	TE20, TEA20, TEF20, TO20, TO30
14	R00237	Shaft (10 1/8" x 3/4")	185220M1	TO35, FE35, F40
15	R00389	Fork - (A=5/8", B=3/4"UNC, C=1/2", D=9 3/4")	181347M1 890674M1	TE20, TEA20, TEF20, TO20, TO30
15	R00392	Fork - (A=5/8", B=3/4"UNC, C=11/16", D=14 3/16")	184358M1	TO35, FE35, F40
16	R40968	Yoke & Shaft Assembly (A=20 1/2")	182554M92	TE20, TEA20, TEF20, TO20, TO30, FE35, TO35, F40



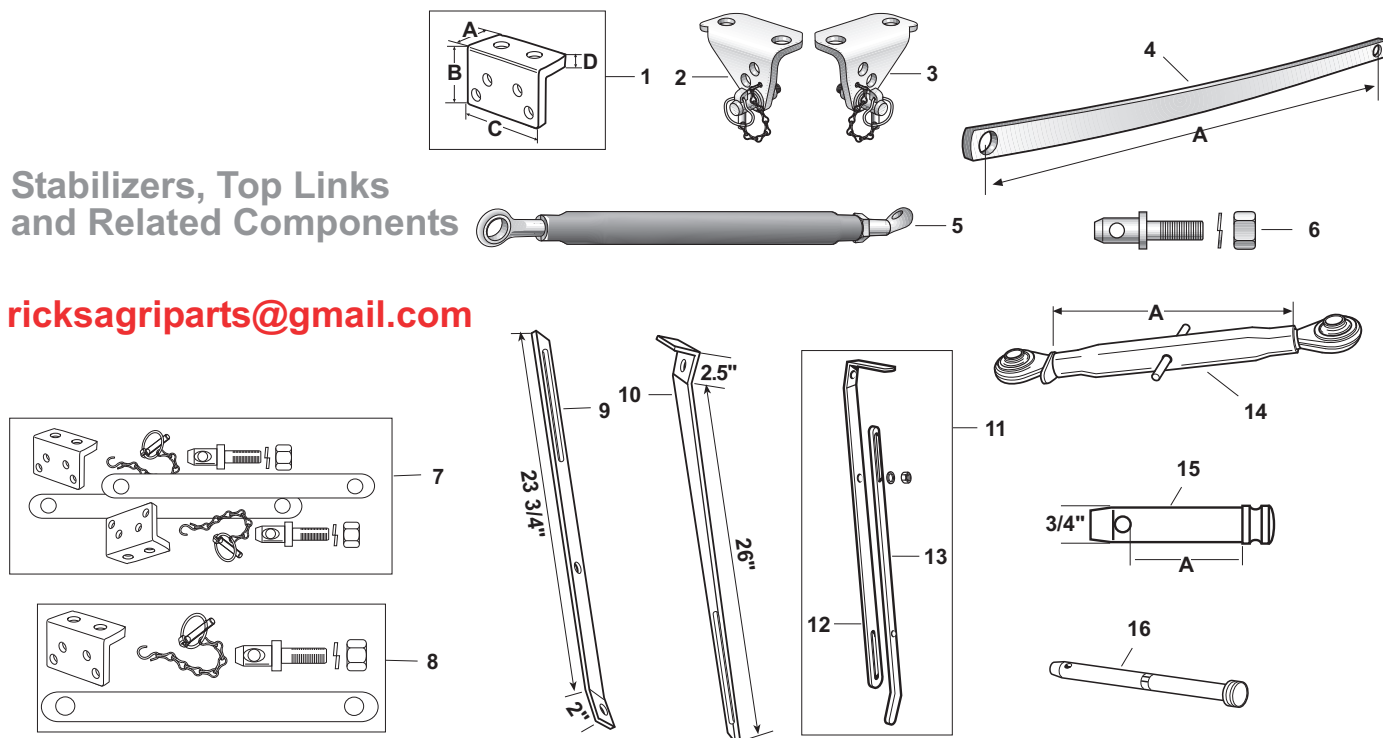
## Lift Arms, Check Chains, Drawbars and Related Components



	OUR #	DESCRIPTION	EQUIVALENT	TRACTOR MODEL
1	<b>R60450</b>	Lower Link Arm (32"c-c) Fixed Ends 1 Hole	180846M91 180847M91	<b>TE20, TEA20, TEF20, TO20, TO30, TO35, FE35, F40</b>
2	<b>R15174</b>	Lower Link Arm (32"c-c) Fixed Ends 3 Holes	193181M1	<b>TE20, TEA20, TEF20, TO20, TO30, TO35, FE35, F40</b>
3	<b>R61019</b>	Eyebolt Assembly (Includes: 1xR04904, 1xR01077 1xR01078, 2xR01006)	353573X1 1952939M1 180859M1	<b>TE20, TEA20, TEF20, TO20, TO30, TO35, FE35, F40</b>
4	<b>R41046</b>	Check Chain Assembly (5/16") (Includes: 1xR00066 - 7 Links 2xR41049)	180333M1 195239M1 181354M1	<b>TE20, TEA20, TEF20, TO20, TO30, TO35, FE35, F40</b>
5	<b>R01412</b>	D Shackle w/ Clevis Pin (5/16")	180333M1 195239M1	<b>TE20, TEA20, TEF20, TO20, TO30, TO35, FE35, F40</b>
6	<b>R60270</b>	Swinging Drawbar Kit		<b>TE20, TEA20, TEF20, TO20, TO30, TO35, F40</b>
7	<b>R00121C</b>	Standard Drawbar - Cat 1 (A=30", B=2 3/8", C=1 3/16", D=1 13/16" E=4 1/2", F=2 1/8", G=7/8", 9 Holes @ 25/32"ø)		<b>TE20, TEA20, TEF20, TO20, TO30, TO35, F40</b>
8	<b>R42607</b>	Check Chain Bracket - LH	897911M1	<b>(FE35 SN 383201&gt; w/ Housing #897719M2)</b>
9	<b>R42518</b>	Check Chain Bracket - RH	897912M1	<b>(FE35 SN 383201&gt; w/ Housing #897719M2)</b>
10	<b>R61369</b>	Clevis Twist (5/8" Pin, 3/4" Clevis)		
10	<b>R52657</b>	Clevis Twist (3/4" Pin, 7/8" Clevis)		
11	<b>R52656</b>	Clevis Straight (3/4" Pin, 7/8" Clevis)		
12	<b>R52090</b>	Drawbar Hook (3/4" T-Pin)		Drawbars up to 1 1/4" Thick

## Stabilizers, Top Links and Related Components

[ricksagriparts@gmail.com](mailto:ricksagriparts@gmail.com)



	OUR #	DESCRIPTION	EQUIVALENT	TRACTOR MODEL
1	<b>R42816</b>	Universal Stabilizer Bracket (A=2 15/16", B=3 1/2", C=6 11/16, D=25/64")	181775M91 181776M91	<b>TE20, TEA20, TEF20, TO20, TO30, TO35, FE35, F40</b>
2	<b>R00160</b>	Stabilizer Bracket - LH w/ Pin, Linch Pin & Chain	181776M91	<b>TE20, TEA20, TEF20, TO20, TO30, TO35, FE35, F40</b>
3	<b>R00161</b>	Stabilizer Bracket - RH w/ Pin, Linch Pin & Chain	181775M91	<b>TE20, TEA20, TEF20, TO20, TO30, TO35, FE35, F40</b>
4	<b>R00177</b>	Rigid Stabilizer Bar - 2 Holes (A=31 1/2")	181778M1	<b>TE20, TEA20, TEF20, TO20, TO30, TO35, FE35, F40 Utility</b>
5	<b>R00184</b>	Adjustable Stabilizer Bar (28 1/2"-35", 7/8" Hole in Both Ends)		<b>TE20, TEA20, TEF20, TO20, TO30, TO35, FE35, F40 Utility</b>
6	<b>R00169</b>	Stabilizer Pin Assembly (5/8" x 1 1/4" Thread) (7/8" Dia Pin x 1/2" Useable)	181777M1	<b>TE20, TEA20, TEF20, TO20, TO30, TO35, FE35, F40</b>
7	<b>R42841</b>	Complete Stabilizer Kit - Both Sides		<b>TE20, TEA20, TEF20, TO20, TO30, TO35, FE35, F40 Utility</b>
8	<b>R42842</b>	Stabilizer Kit - 1 Side		<b>TE20, TEA20, TEF20, TO20, TO30, TO35, FE35, F40 Utility</b>
9	<b>R60455</b>	Drawbar Stay Strap - Lower	180494M1	<b>(TE20, TEA20, TEF20, TO20, TO30 Early Models)</b>
10	<b>R60460</b>	Drawbar Stay Strap - Upper	180493M1	<b>(TE20, TEA20, TEF20, TO20, TO30 Early Models)</b>
11	<b>R41736</b>	Drawbar Stay Strap Assembly - Cat 1	181986M1 181985M1	<b>(TE20, TEA20, TEF20, TO20, TO30, F40 Utility Late Models)</b>
12	<b>R41734</b>	Drawbar Stay Strap - Upper	181986M1	<b>(TE20, TEA20, TEF20, TO20, TO30, F40 Utility Late Models)</b>
13	<b>R41733</b>	Drawbar Stay Strap - Lower	181985M1	<b>(TE20, TEA20, TEF20, TO20, TO30, F40 Utility Late Models)</b>
14	<b>R49312</b>	Top Link - Cat 1-1 (16" Center Tube)		
14	<b>R49316</b>	Top Link - Cat 1-1 (20" Center Tube)		
15	<b>R00231</b>	Top Link Pin - Cat 1 (A=2")		
15	<b>R00073</b>	Top Link Pin - Cat 1 (A=2 3/4")		
15	<b>R00075</b>	Top Link Pin - Cat 1 (A=3 3/8")		
15	<b>R00074</b>	Top Link Pin - Cat 1 (A=3 3/4")		
15	<b>R00077</b>	Top Link Pin - Cat 1 (A=4 3/4")		
16	<b>R00071</b>	Hinged Pin	180901M1	<b>TO35, FE35, F40</b>