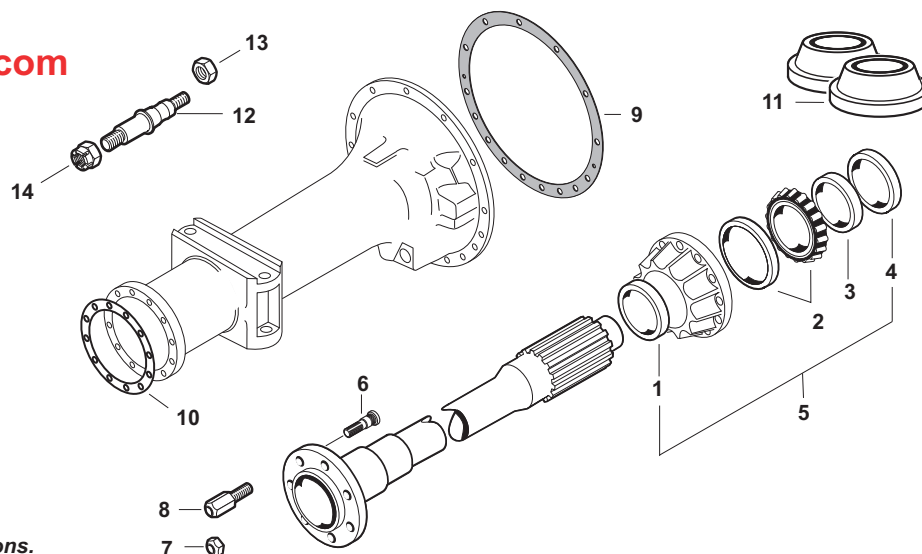
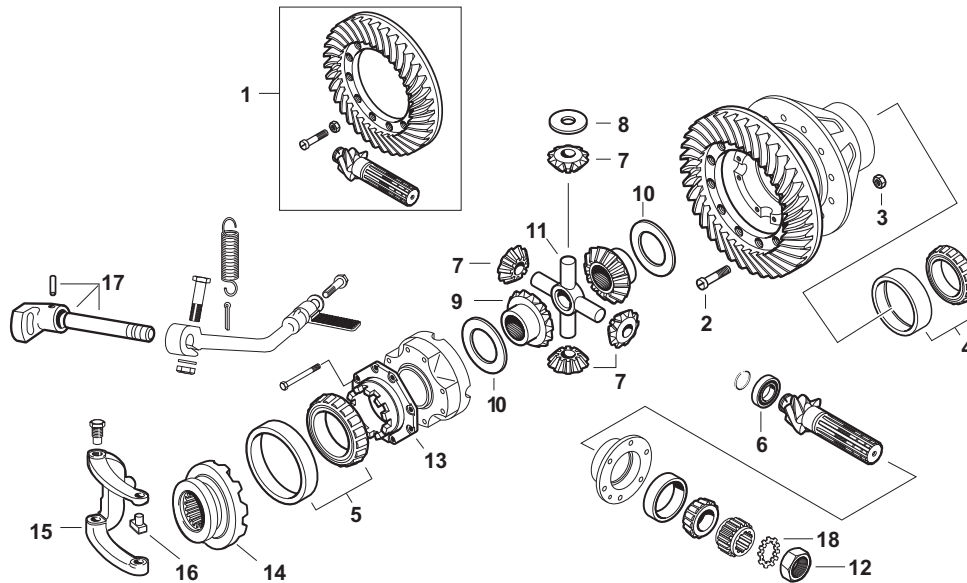


Rear Axle and Related Components



**Note: Fits TO30 if Rear Axle has been converted to TO35 Axle. Check Dimensions.*

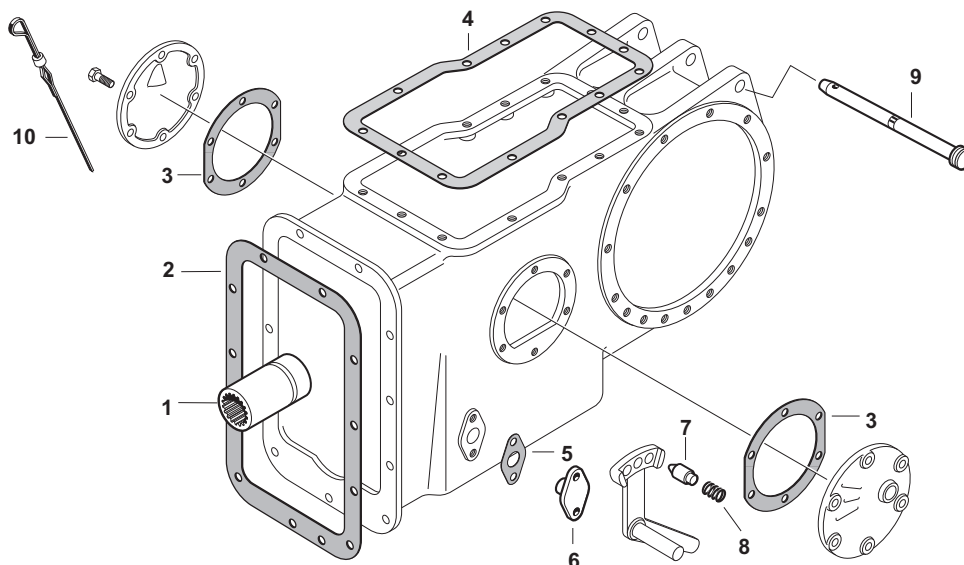
	OUR #	DESCRIPTION	EQUIVALENT	TRACTOR MODEL
1	R41416	Outer Axle Seal (2 3/8" X 3 1/2" X 5/8")	195557M1	TE20, TEA20, TEF20, TO20, TO30
1	R05946	Outer Axle Seal (2 3/4" X 3 5/8" X 19/32")	195677M1	TO30*, TO35, F40
2	R18516	Axle Bearing Cup: 4T-3720, Cone: 4T-3780	195162M1 831363M1	TE20, TEA20, TEF20, TO20, TO30
2	R05945	Axle Bearing Cup: 4T-453X, Cone: 4T-462A	195675M1 195676M1	TO30*, TO35, F40
3	R41407	Shrink on Collar (2" X 2 15/16" X 11/16")	181257M1	TE20, TEA20, TEF20, TO20, TO30
3	R05695	Shrink on Collar (3" X 2 1/4" X 11/16")	180596M1	TO30*, TO35, F40
4	R41417	Inner Axle Seal (2" X 2 7/8" X 1/2")	195555M1	TE20, TEA20, TEF20, TO20, TO30
4	R05947	Inner Axle Seal (2 1/8" X 2 7/8" X 1/2")	195678M2	TO30*, TO35, F40
5	R42078	Kit - Seals & Collar (Contains 1xR41416, 1xR41407, 1xR41417)		TE20, TEA20, TEF20, TO20, TO30
5	R05948	Kit - Seals & Collar (Contains 1xR05695, 1xR05945, 1xR05946, 1xR05947)		TO30*, TO35, F40
6	R01751	Rear Wheel Stud (9/16" UNF)	181260M1 185400M1	TE20, TEA20, TEF20, TO20, TO30
7	R01752	Rear Wheel Nut (9/16" UNF)	180004M1	TE20, TEA20, TEF20, TO20, TO30, TO35, FE35, F40
8	R40241	Dual Wheel Adaptor (9/16" UNF Female x 9/16" UNF Male)	818017M1	TE20, TEA20, TEF20, TO20, TO30
9	R40922	Gasket (15 1/4") Trumpet Housing	183254M1	TE20, TEA20, TO20, TO35, (FE35 SN77629>), F40
10	R42622	Gasket	181232M1	TE20, TEA20, TEF20, TO20, TO30
11	R61512	Sure Seals - Pack of 2		TO20
12	R01700	Lower Link Shaft	181229M1 181229M2/M5	TO20, (TEA20 w/ 85mm, SN 325001>), TO30, TO35, FE35, F40
13	R04961	Nut - Internal (5/8" Lock UNF)	376450X1	TO20, (TEA20 w/ 85mm, SN 325001>), TO30, TO35, FE35, F40
14	R08933	Nut - External (5/8" Slotted UNF)	353927X1	TO20, (TEA20 w/ 85mm, SN 325001>), TO30, TO35, FE35, F40



Rear Differential and Related Components

	OUR #	DESCRIPTION	EQUIVALENT	TRACTOR MODEL
1	R40897	Ring Gear & Pinion (6 x 37, 9.35" Pinion)	1885317M91	TO35, FE35
2	R40901	Bolt	825776M1	(TO30, FE35, TEA20, TEF20, TED20 SN 325001), F40
3	R40900	Nut	891947M1	(TO30, FE35, TEA20, TEF20, TED20 SN 325001), F40
4	R40903	Bearing & Cup (Brg CBK239, Cup CBK339)	1850909M91	(FE35 w/ Differential Lock)
4	R18502	Bearing & Cup (Brg 3984, Cup 3920)	195159M1 195160M1	TE20, TEA20, TEF20, TO20, TO30, TO35, (FE35 less Differential Lock), F40
5	R18502	Bearing & Cup (Brg 3984, Cup 3920)	195159M1 195160M1	TE20, TEA20, TEF20, TO20, TO30, TO35, FE35, F40
6	R40905	Bearing	191250M1	(TO35 SN 169467>)
7	R40909	Gear	181275M1	TO35, FE35, F40
8	R42019	Thrust Washer	181277M1 514958M1	TO35, FE35, F40
9	R40911	Gear (16 Bevel, 19 Spline)	181249M3	(TO30 LH), (TO35 LH/RH), (FE35 LH >SN 383988 less Differential Lock), (FE35 LH w/ Differential Lock), (F40 LH/RH)
9	R40912	Gear (16 Bevel, 19 Spline)	184700M1	(FE35 RH >SN 383988 less Differential Lock), (FE35 RH w/ Differential Lock)
9	R40913	Gear (17 Bevel, 39 Spline)	897006M1 897007M1	(FE35 LH/RH SN 383988> less Differential Lock)
10	R42020	Thrust Washer	181247M1	TEA20, TEF20, FE35 (SN 83855>, w/ 85mm SN 325001>), TO30, F40
11	R42022	Cross	181276M1 894302M1	TO35, FE35, F40
12	R42024	Lock Nut	180456M1	TO35, FE35, F40
13	R42025	Cap - Differential Lock	190963M1	(FE35 w/ Differential Lock)
14	R42041	Coupler - Differential Lock	897036M1	(FE35 SN 383201>)
15	R42043	Fork	190968M1	(FE35 w/ Differential Lock)
16	R42045	Shoe	190980M1	(FE35 w/ Differential Lock)
17	R42046	Cam Assembly	190960M91	(FE35 w/ Differential Lock)
18	R42826	Washer	180455M1	TO35, FE35, F40

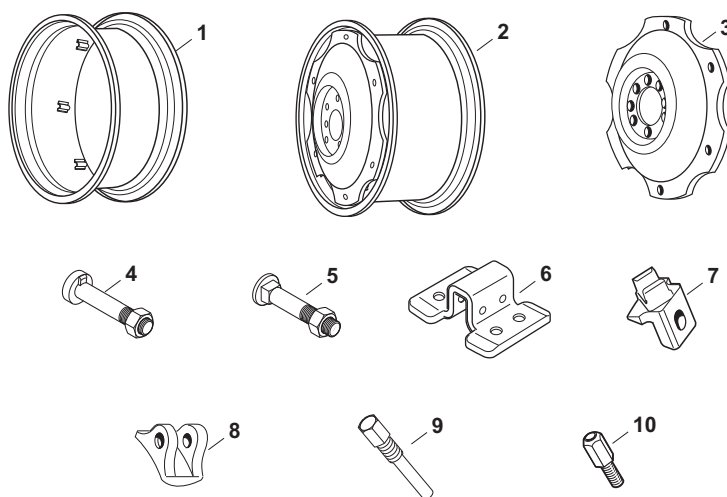
Rear Differential and Related Components



ricksagriparts@gmail.com

	OUR #	DESCRIPTION	EQUIVALENT	TRACTOR MODEL
1	R40810	Coupler (5" x 2 1/8")	183088M1 880069M1	(TO35 SN 1698566>), FE35, F40
2	R40814	Gasket	1861986M1	FE35
3	R03352	Gasket	181217M1	TE20, TEA20, TEF20, TO20, TO30, TO35, FE35, F40
4	R42217	Gasket	180881M1	TO20, TE20, TEA20, TEF20, TO30
4	R03396	Gasket (0.45mm Thick)	181408M1	FE35, F40
4	R40816	Gasket (0.15mm Thick)	886549M2	TO35
5	R42069	Gasket	180904M1	TO35, FE35, F40
6	R41553	Peg - Pump Support	180905M1	TO35, FE35, F40
7	R41550	Plunger - PTO Index	180418M1	TO35, FE35, F40
8	R41974	Spring	180417M1 191221M1	TO35, FE35, F40
9	R00071	Hinged Pin	180901M1	TO35, FE35, F40
10	R40823	Dip Stick	828810M91	FE35

ricksagriparts@gmail.com



OUR #		DESCRIPTION	EQUIVALENT	TRACTOR MODEL
1	R61709	Rim (9 x 28", 6 Loop)		
1	R61966	Rim (10 x 28", 6 Loop)		
1	R61178	Rim (11 x 28", 6 Loop)		
1	R61712	Rim (12 x 28", 6 Loop)		
2	R61968	Rim Assembly (10 x 28") Includes: R61133		
3	R61133	Disc (28" - 6 Loops) (24 3/8" Dia), 8 Lugs - 6" Dia. Bolt Pattern, 4 5/16" Center Hole	193701M1	
4	R04352	Rim to Disc Bolt & Nut Pipped Head (5/8")		
5	R65113	Rim to Disc Bolt & Nut Carriage Head Bolt (5/8")		
6	R41607	Weld-on Lug		
7	R41324	Bridle - Clamp	1755057M2	Power Adjusted Rims - Most Models
8	R41383	Stop	1755060M1	Power Adjusted Rims - Most Models
9	R41384	Screw - Stop	1751403M1	Power Adjusted Rims - Most Models
10	R40241	Dual Wheel Adaptor	818017M1	