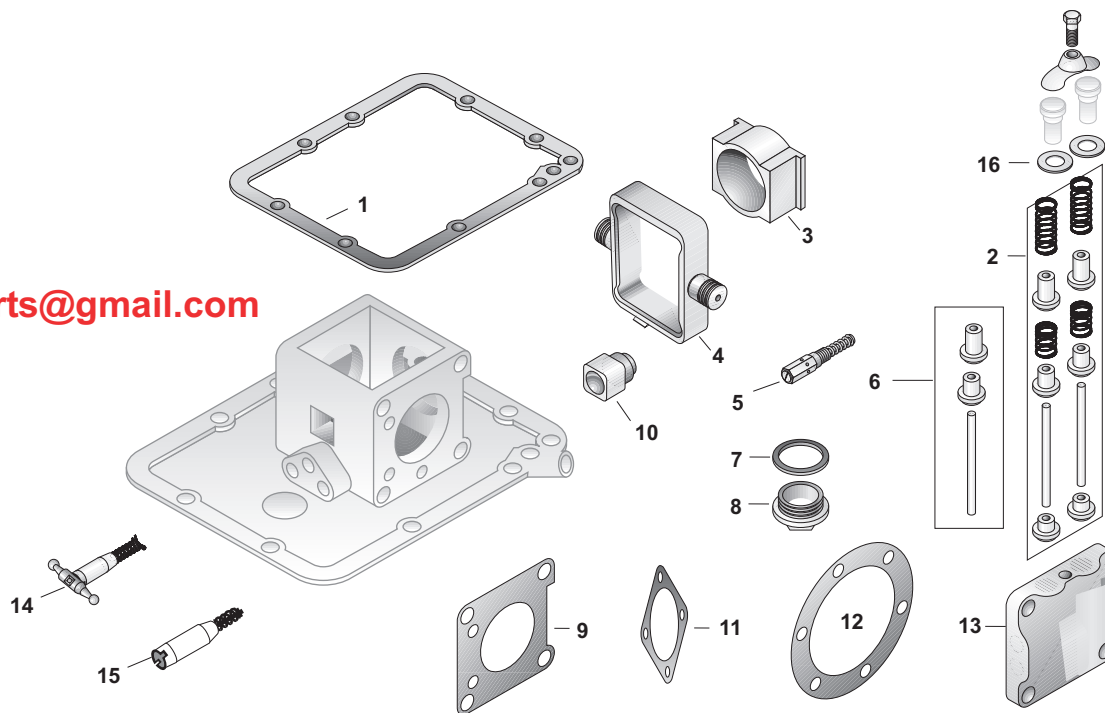
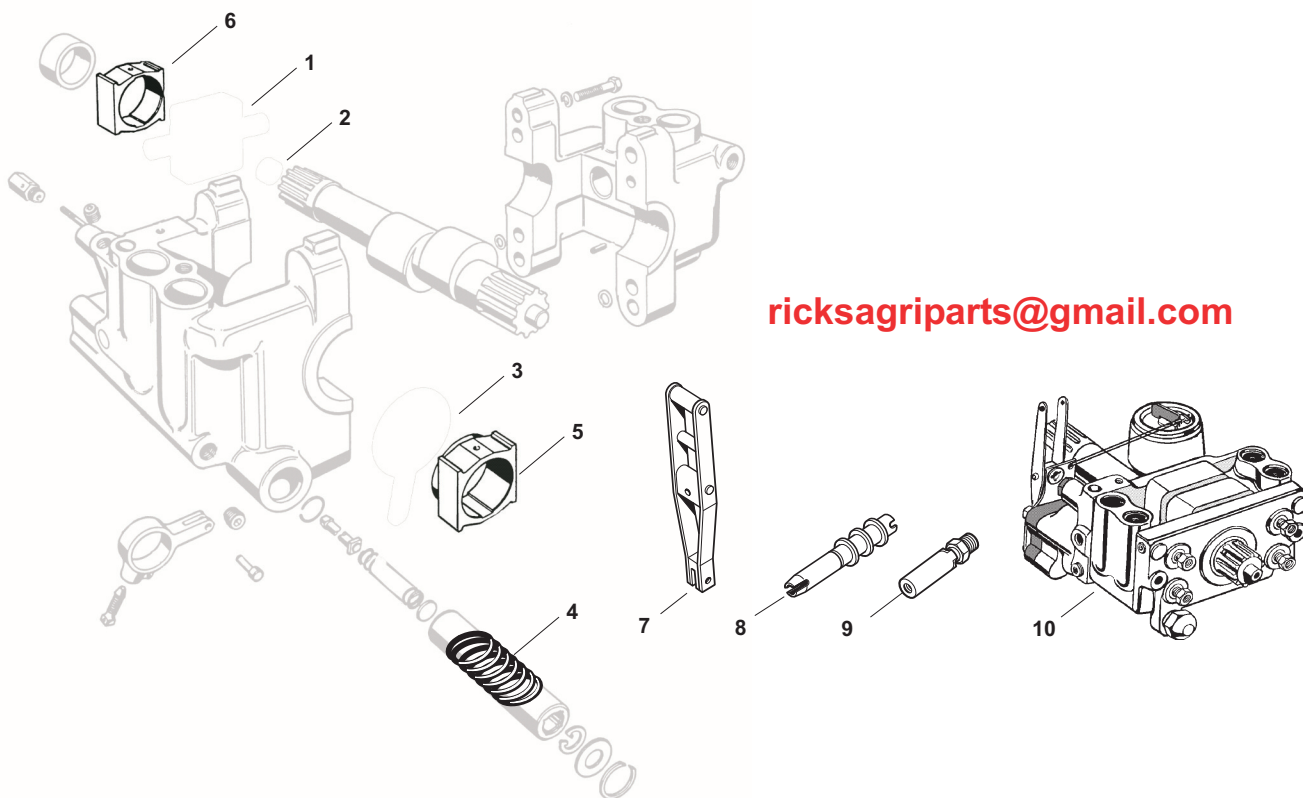


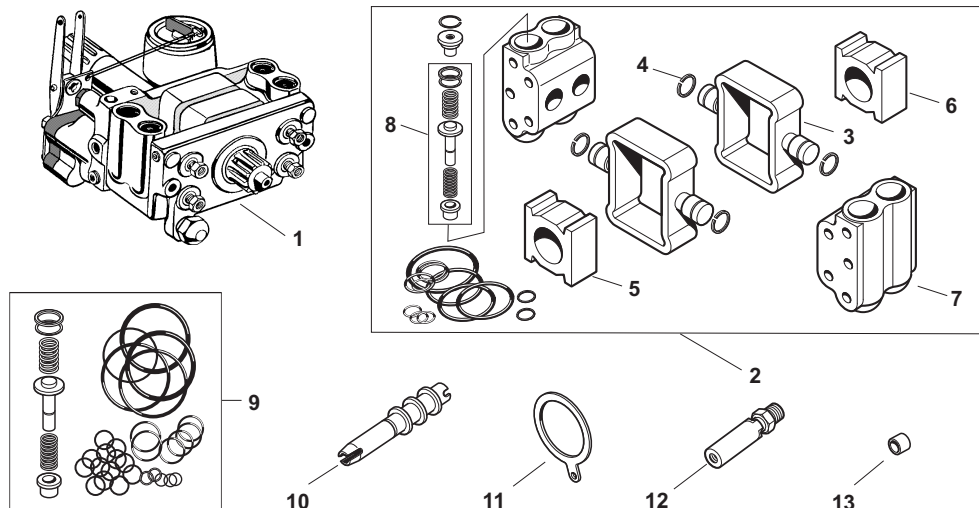
ricksagriparts@gmail.com



OUR #	DESCRIPTION	EQUIVALENT	TRACTOR MODEL
R61725	Complete Rebuild Kit - (Includes Chambers) Contains: 1 X R61320, 2 X R61324, 2 X R74009, 2 X R74010, 1 X R60449, 1 X R60023, 1 X R61323, 2 X R61321, 1 X R61322, 2 X R03352, 2 X R61319, 4 X R08848		TE20, TEA20, TEF20, TO20, TO30
R61325	Complete Rebuild Kit - (Less Chambers) Contains: 1 X R61320, 2 X R61324, 2 X R74009, 2 X R74010, 1 X R60449, 1 X R60023, 1 X R61323, 2 X R61321, 1 X R61322, 2 X R03352, R08848 X 4		TE20, TEA20, TEF20, TO20, TO30
1	R61320 Gasket - Pump to Housing	4082/181065M1	TE20, TEA20, TEF20, TO20, TO30
2	R61324 Chamber Repair Kit (1 per Side)		TE20, TEA20, TEF20, TO20, TO30
3	R74009 Camblock	1042/181066M1	TE20, TEA20, TEF20, TO20, TO30
4	R74010 Piston	4009/890675M1	TE20, TEA20, TEF20, TO20, TO30
5	R60023 Relief Valve (2050 PSI)	2174/207887 181087M91	TE20, TEA20, (TEF20 >SN 330043), TO20, TO30
6	R60055 Guide & Valves (Large Valve has one end closed)	2496	TEA20, TEF20
7	R61323 Drain Plug Gasket	181468M1/1170	TE20, TEA20, TEF20, TO20, TO30
8	R41318 Drain Plug	181467M1	TE20, TEA20, TEF20, TO20, TO30
9	R61321 Pump Chamber Gasket	2181/181067M1 890664M1	TE20, TEA20, (TEF20 >SN 285933), TO20, TO30
10	R60449 P.T.O. Shaft Bush	181095M1/1059	TE20, TEA20, TEF20, TO20, TO30
11	R61322 P.T.O. Shaft Gasket	1075 181431M1	TE20, TEA20, TEF20, TO20, TO30
12	R03352 Side Plate Gasket	181217M3	TE20, TEA20, TEF20, TO20, TO30
13	R61319 Valve Chamber - Empty (Fits either side)	181074M91 181076M91	TE20, TEA20, TEF20, TO20, TO30
14	R60057 Control Valve	2425	TE20, TEA20, TEF20, TO20, TO30
15	R17266 Control Valve w/ Slotted End - Oscillating (T Handle not Included)	2425	(TEA20, TEF20 SN 134001-407101), TO35
16	R08848 Copper Washer	181096M1	TE20, TO20, TO30

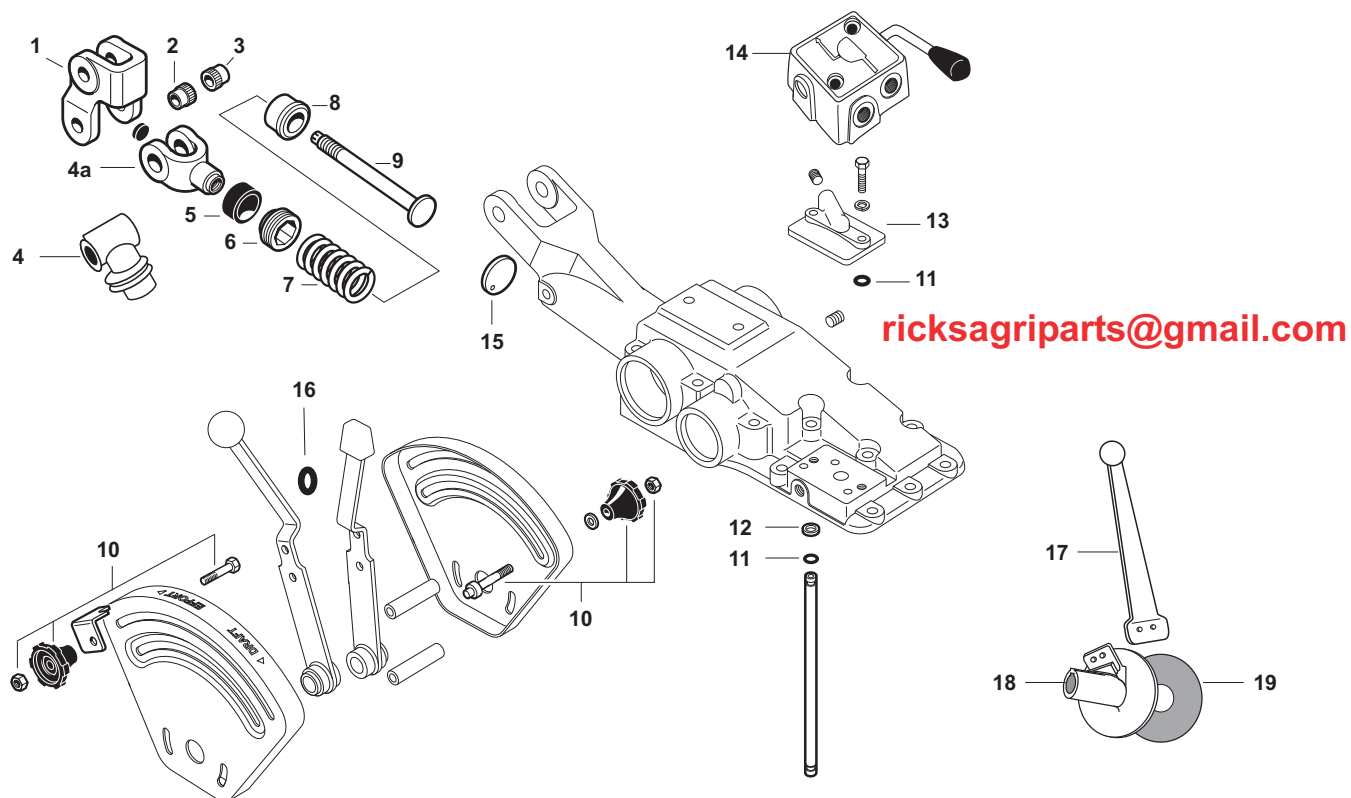


	OUR #	DESCRIPTION	EQUIVALENT	TRACTOR MODEL
1	R60031	Piston	181043M1	(TO35 >SN 179304), F40
2	R40870	Needle Bearing - Camshaft (13/16"OD)	1000251M1	(TO35 >SN 179304), FE35, F40
3	R41859	Follower	180933M1	(TO35 >SN 179304), FE35, F40
4	R42164	Spring	180940M1	(TO35 >SN 179304), F40
5	R40857	Camblock - Front	180924M2 894607M1	(TO35 >SN 179304), F40
6	R40858	Camblock - Rear	180925M2	TO35, F40
7	R41482	Lever	189370M91	FE35, F40
8	R00706	Control Valve	189427M92	(TO35 >SN 179304), FE35, F40
9	R00702	Relief Valve (2000PSI)	828927M92	(TO35 >SN 168853)
9	R03358	Relief Valve (3000PSI)	883402M91	(TO35 SN 168853>)
10	R60461	Hydraulic Pump - Can replace old style pump	184473M93 183005M91	TO35, F40

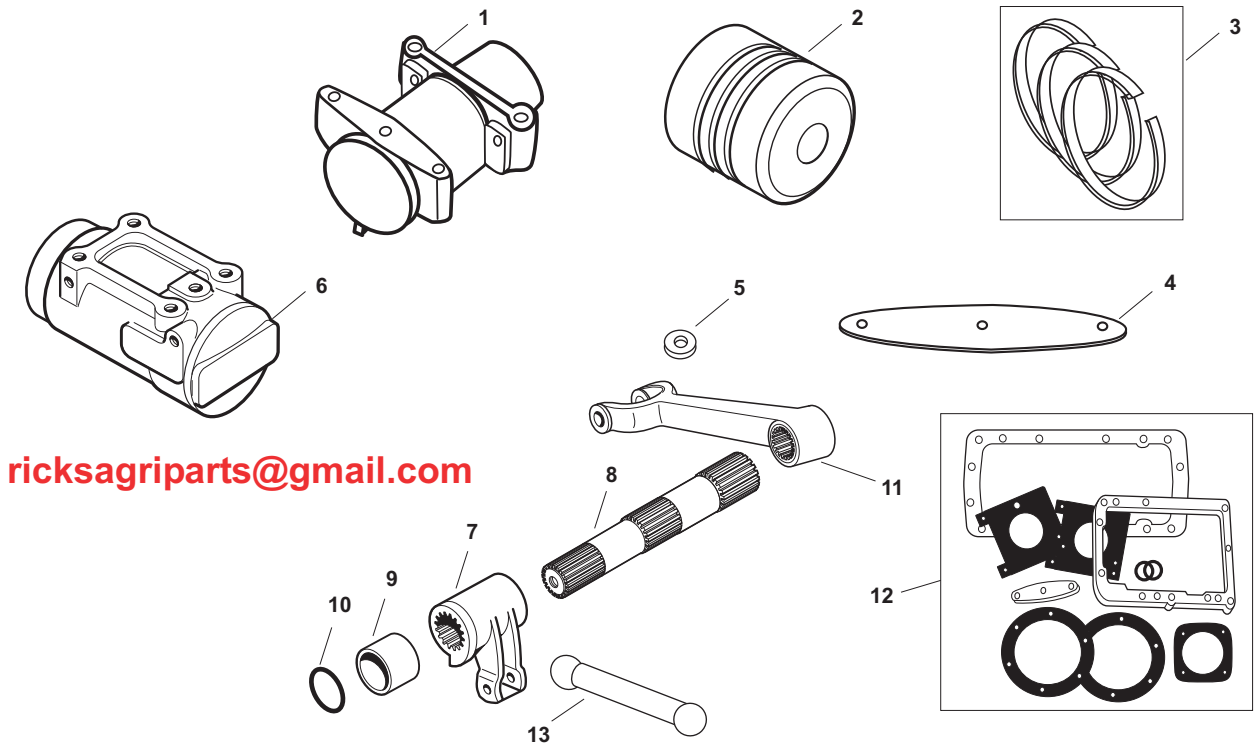


ricksagriparts@gmail.com

	OUR #	DESCRIPTION	EQUIVALENT	TRACTOR MODEL
1	R60461	Pump Assembly	184473M93	(TO35 SN 179304>), FE35
2	R40843	Repair Kit		(TO35 SN 179304>), FE35
3	R03346	Piston (.909" Dia) Use w/ Sealing Ring R03353	184470M1 190799M1	(TO35 SN 179304>), FE35
4	R03353	Sealing Ring - Use w/ Piston R03346	892604M1	(TO35 SN 179304>), FE35
5	R40857	Camblock - Front	180924M2 894607M1	(TO35 SN 179304>), FE35
6	R40858	Camblock - Rear	180925M2	(TO35 SN 179304>), FE35
7	R40846	Valve Chamber Assembly	184471M1	(TO35 SN 179304>), (FE35 SN 65684>)
8	R03274	Valve Chamber Repair Kit - Contains 2 Repairs 1 Side Chamber	1810678M91	(TO35 SN 179304>), FE35
9	R42009	Valve Chamber Repair Kit w/ O-Rings Repairs Both Chambers		(TO35 SN 179304>), FE35
10	R00706	Control Valve	189427M92	FE35
11	R41859	Follower	180933M1	(TO35 SN 179304>)
12	R03271	Relief Valve	883402M92	(TO35 SN 179304>)
13	R40870	Needle Bearing - Camshaft (13/16"OD)	1000251M1	(TO35 SN 179304>)



	OUR #	DESCRIPTION	EQUIVALENT	TRACTOR MODEL
1	R41364	Rocker - Draft Control	180973M2	TO35, FE35, F40
2	R41480	Bushing - Solid End	181982M1	FE35, F40
3	R41481	Bushing - Slotted	180974M1	FE35, F40
4	R60586	Yoke (5/8" x 24 Thread)	181055M1	TE20, TEA20, TEF20, TO20, TO30
4a	R41365	Clevis - Draft Control	180972M2	TO35, FE35, F40
5	R41368	Boot	887654M1	TO35, FE35, F40
6	R41369	Nut	180979M1	TO35, FE35, F40
7	R41428	Spring	182582M1 180998M1	TE20, TEA20, TEF20, TO20, TO30, (TO35 SN 165554>), FE35, F40
8	R41367	Seat	182581M1	(TO35 SN 165554>), FE35, F40
9	R03350	Plunger	182580M1	(TO35 SN 165554>), FE35, F40
10	R41565	Knob & Stud	1860403M1 898201M1	FE35, F40
11	R40876	O-Ring	195561M1	TO35, FE35, F40
12	R40877	Back-up Ring	195874M1	TO35, FE35, F40
13	R42292	Plate	180908M1 520933M91	TO35, FE35, F40
14	R60032	Diverter Valve		
15	R42302	Disc - Draft Control	180981M1	TO35, FE35, F40
16	R42222	Nylon Washer	181041M1	TO35, FE35, F40
17	R66598	Lever - Hydraulic Quadrant		TE20, TEA20, TEF20, TO20, TO30
18	R66515	Lift Control Plate - Cast Aluminum		TE20, TEA20, TEF20, TO20, TO30
19	R60635	Friction Disc	180896M1	TE20, TEA20, TEF20, TO20, TO30



OUR #	DESCRIPTION	EQUIVALENT	TRACTOR MODEL
1	R42228 Cylinder (2 1/2")	829382M1 180884M1 201183	TE20, TEA20, TEF20, TO20, TO30
2	R61588 Piston - Less Rings (2 1/2")	181983M1	TE20, TEA20, TEF20, TO20, TO30, (FE35 >SN 65684)
2	R61001 Piston - Less Rings (3")	184443M91	(TO35 SN 179304>), (FE35 SN 65685>)
3	R61589 Ring - Set of 3 (2 1/2")	830663M91 180898M1	TE20, TEA20, TEF20, TO20, TO30, (FE35 >SN 65684), F40
3	R41848 Ring (3") 1 per Pack - 3 Required	184447M1	(TO35 SN 179304>), (FE35 SN 65685>),
4	R42212 Gasket - Cylinder - Lift Cover	181059M1	TE20, TEA20, (TEF20 >SN 330042), TO20, TO30
5	R42213 Gasket - 2 Required Cylinder to Lift Cover	181058M1 1066	TE20, TEA20, (TEF20 >SN 268153 - SN 330042), TO20, TO30
6	R61000 Cylinder (3")	190859M1	(FE35 SN 285030>)
7	R41446 Lift Arm	180970M2	TO35, FE35, F40
8	R60630 Shaft	890722M1	TE20, TEA20, TEF20, TO20, TO30
8	R41356 Shaft	184359M2	(FE35 >SN 65684), F40
9	R41425 Bushing - 4 Required (2" x 2 3/8" x 1 3/8")	181018M1 180896M1	TE20, TEA20, TEF20, TO20, TO30, TO35, FE35, F40
10	R01955 O-Ring	195565M1	TO35, FE35, F40
11	R42171 Lift Arm	180910M1	TE20, TEA20, TO20, TO30, TO35, FE35, F40
12	R61504 Repair Kit - Includes Gaskets, O-Rings for Lift Cover & Pump	LCRK928 LCRK2030	TE20, TEA20, TEF20, TO20, TO30
13	R66195 Lift Rod	180903M2	TE20, TEA20, TEF20, TO20, TO30