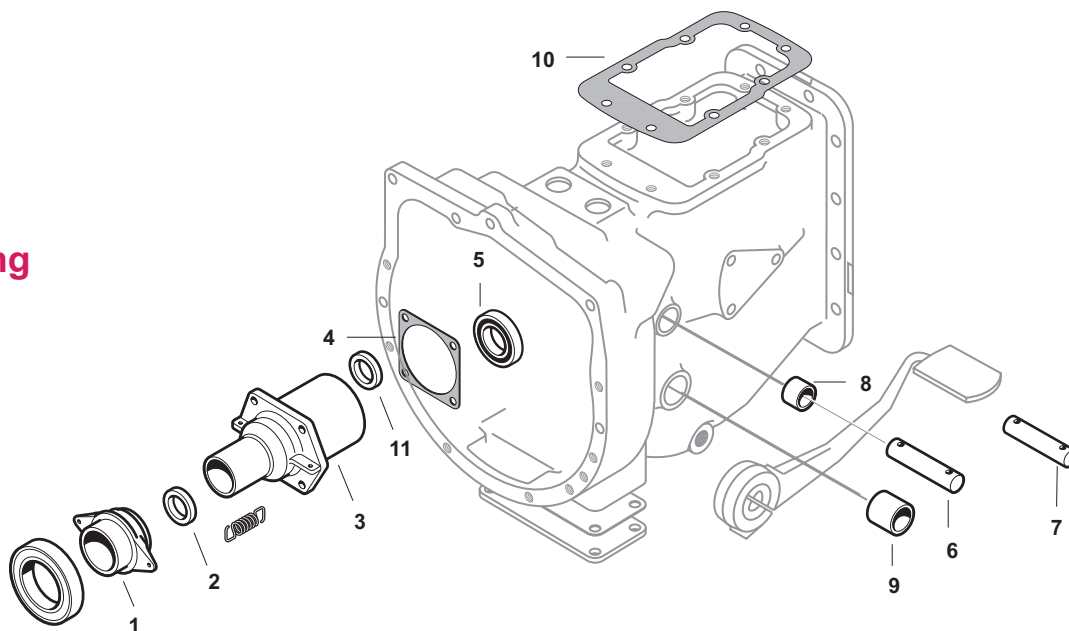
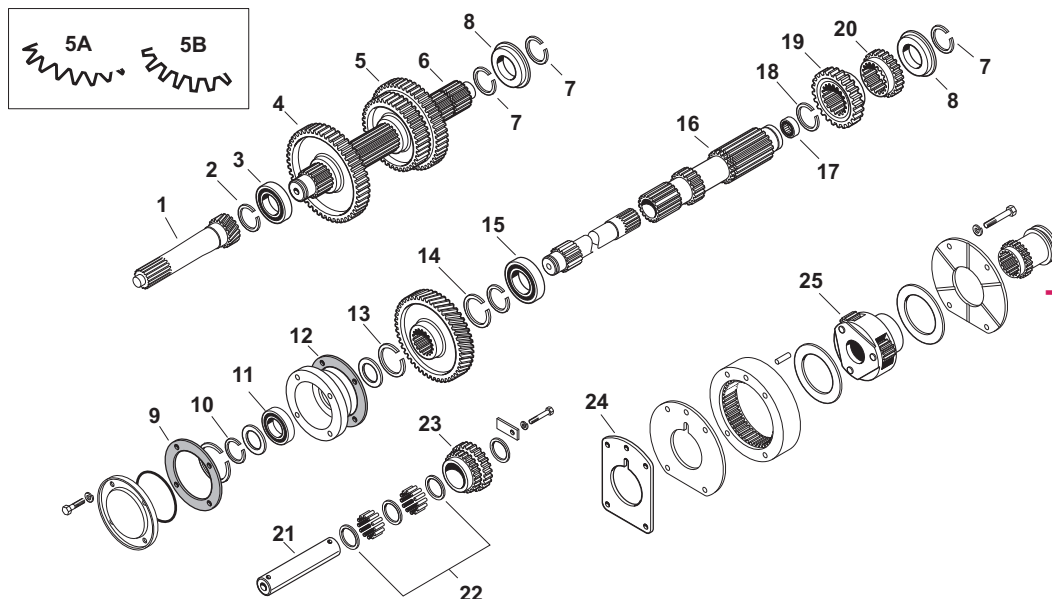


Clutch Housing and Related Components



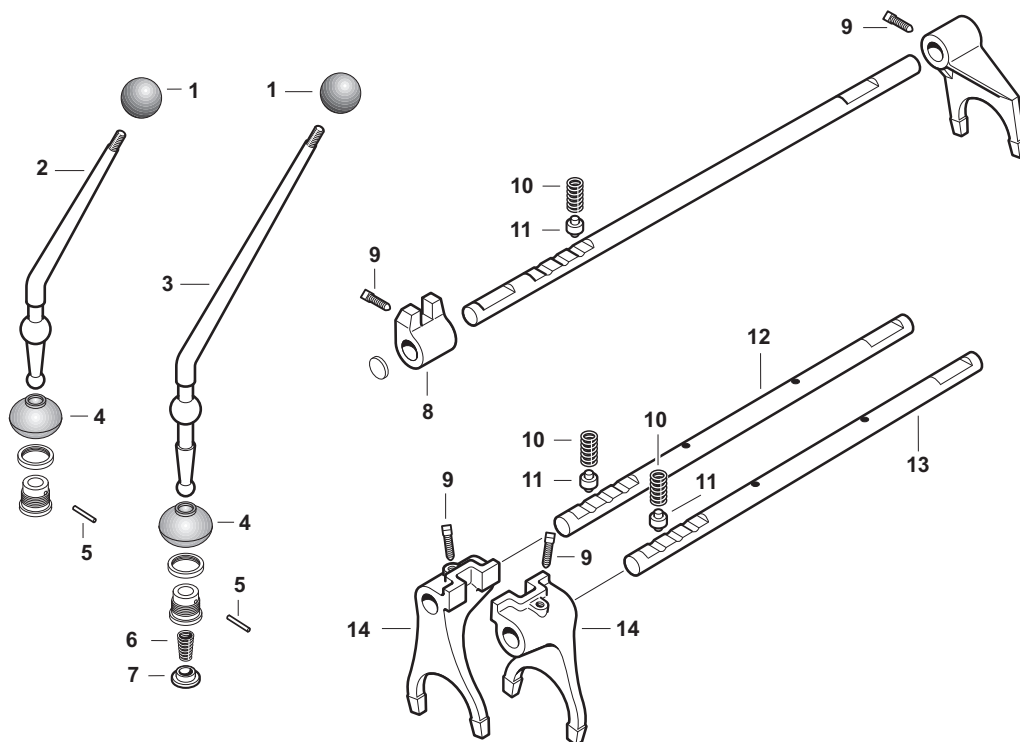
	OUR #	DESCRIPTION	EQUIVALENT	TRACTOR MODEL
1	R40737	Release Bearing Carrier (2 1/8" ID)	183129M2	TO35, FE35, F40 (Single Clutch)
1	R40738	Release Bearing Carrier (2 1/4" ID)	886727M1	(See R41870 Note)
2	R41749	Seal (2" x 1.54" x .28")	886673M1	(FE35 w/ Early Input Housing, Check Seal Dimensions)
2	R40741	Seal (1 3/4" x 2 1/4" x 3/8")	195503M1	F40
3	R41870	Input Housing	1867223M1	(FE35, TO35, F40 Standard 6-speed), Note: When replacing original Housing No.180428M2, also use R40738 Release Bearing Carrier
4	R41332	Gasket	180434M1	TO35, FE35, F40
5	R40744	Bearing (80mm x 50mm x 16mm)	195494M1	(FE35, TO35, F40 w/ Dual Clutch)
6	R41858	Shaft - Clutch Fork (1" x 5 17/32")	180444M1 1679460M1	TO35, FE35, F40
7	R41857	Shaft - Clutch Fork (1" x 3 19/32")	180449M1	TO35, FE35, F40
8	R40740	Bushing - Clutch Shaft (1" x 1 1/16" x 3/4")	184592M1	TE20, TEA20, TO35, FE35, F40
9	R41741	Bushing - Brake Shaft (1 3/8" x 1 1/2" x 1 7/16")	180801M1	TE20, TEA20, TO35, FE35, F40
10	R41352	Gasket	180511M2	(TO35 Manual Steering), FE35, F40
11	R42395	Seal Input Shaft (1 1/8" X 2 1/4")	195523M1	TO35, FE35, F40



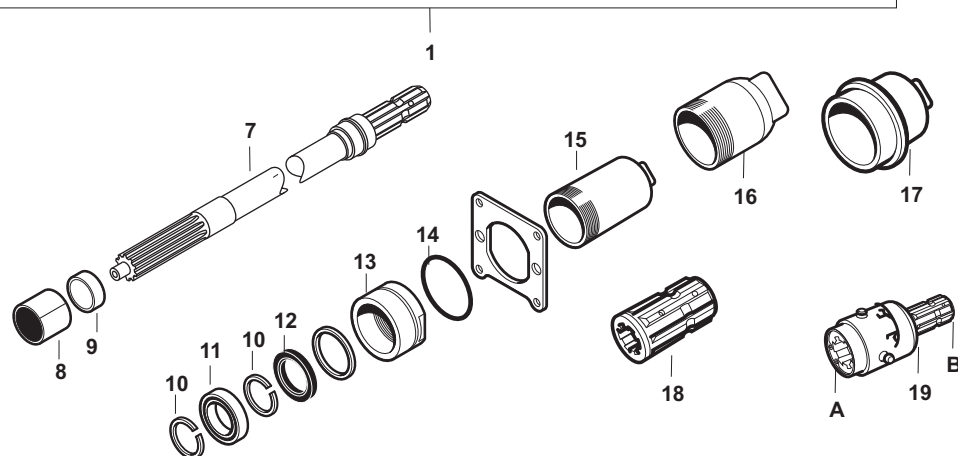
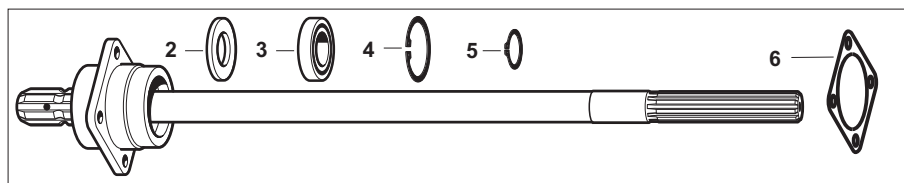
6 Speed Transmission Gears and Related Components

	OUR #	DESCRIPTION	EQUIVALENT	TRACTOR MODEL
1	R42005	Input Shaft (18 Tooth - 10 Spline)	180420M1	TO35, FE35
2	R41630	Snap Ring (44mm x 36mm x 2.4mm)	195222M1	TO35, FE35
3	R40781	Bearing (40mm x 89mm x 18mm)	195505M1	TO35, FE35, F40
4	R40749	Gear (45 Tooth - 18 Spline)	183042M1	(TO35 SN 171549>), (FE35 >SN 365359)
5	R40751	Gear (36/46 Tooth, 18 Spline=A)	180416M1	TO35, (FE35 >SN 213313), F40
5	R40752	Gear (36/46 Tooth, 18 Spline=B)	891904M1	(FE35 SN 213314>)
6	R40764	Mainshaft (11.34", 18 Spline, 3 Groove)	180441M1	TO35, (FE35 >SN 213313)
6	R40768	Mainshaft (11.34", 18 Spline, 5 Groove)	187168M1	(FE35 SN 213314>)
7	R41623	Snap Ring	195363M1	TO35, FE35, F40
8	R40785	Bearing #6210Z w/ Snap Ring (50mm x 90mm x 20mm)	195493M1	TO35, FE35, F40
9	R41508	Gasket	181237M1	TO35, FE35, F40
10	R41630	Snap Ring	195222M1	TO35, FE35, F40
11	R18058	Bearing 6208 (40mm x 80mm x 18mm)	195502M2	TO35, FE35, F40
12	R41509	Gasket	180432M1	TO35, F40 (w/ Dual Clutch)
13	R41629	Snap Ring	195497M1	TO35, F40 (w/ Dual Clutch)
14	R41624	Snap Ring	195499M1	TO35, FE35, F40
15	R40757	Bearing (#6211Z)	195507M1	TO35, FE35, F40
16	R40758	Countershaft (15 Tooth, 17 Spline)	183054M91	(TO35, w/ Dual Clutch SN 171549>)
17	R40761	Needle Bearing	195453M1	(TO35, w/ Dual Clutch), FE35, F40
18	R41632	Snap Ring	195500M1	TO35, FE35, F40
19	R40762	Pinion Gear (33 Tooth, 17 Spline)	180415M1	TO35, FE35, F40
20	R40763	Pinion Gear (23 Tooth, 17 Spline)	180419M1	TO35, FE35, F40
21	R61002	Reverse Idler Shaft	180445M1	TO35, FE35, F40
22	R40787	Needle Rollers and Washers	830735M91	(TO35, SN 171549>), FE35
23	R40788	Reverse Gear (21 & 13 Tooth)	183040M1	(TO35, SN 171548>), FE35
24	R41921	Shim (.017")	184011M1	TO35, FE35
25	R40754	Carrier	827719M1	(TO35 >SN 383154), (FE35 >SN383155), F40

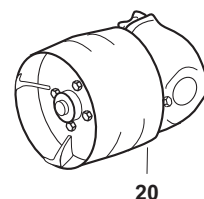
6 Speed Selectors and Related Components



	OUR #	DESCRIPTION	EQUIVALENT	TRACTOR MODEL
1	R00641	Ball	180006M1	TO20, TE20, TEA20, TEF20, TO30, TO35, FE35, F40
2	R41551	Lever - High/Low	180440M2	TO35, FE35, F40
3	R41563	Lever - Main	891405M1	TO35, FE35, F40
4	R40821	Boot	180579M3 520858M1	TO20, TO30, TO35, FE35, F40
5	R41552	Pin	180581M1	TE20, TEA20, TEF20, TO20, TO30, TO35, FE35, F40
6	R41555	Spring	192007M1 180582M1	TO20, TO30, TO35, FE35, F40
7	R41973	Spring Seat	180583M1	TE20, TEA20, TEF20, TO20, TO30, TO35, FE35, F40
8	R41975	Selector - High/Low	180446M1	TO35, FE35, F40
9	R41557	Locking Screw	881144M1 180002M1	TE20, TEA20, TEF20, TO20, TO30, TO35, FE35, F40
10	R41974	Spring	191221M1	TO35, FE35, F40
11	R41550	Plunger	180418M1	TO35, FE35, F40
12	R41977	Rail (1st and Reverse)	180442M2 1678867M1	TO35, FE35, F40
13	R41978	Rail (2nd and 3rd)	180438M2 1678866M1	TO35, FE35, F40
14	R41432	Fork (1st, Reverse, 2nd & 3rd)	180437M1	TO35, FE35, F40



PTO and Related Components



	OUR #	DESCRIPTION	EQUIVALENT	TRACTOR MODEL
1	R00280	P.T.O. Conversion Kit (1 3/8" Shaft)		TE20, TEA20, TED20, TEF20, TO20, TO30 (Converts 1 1/8" P.T.O. system to 1 3/8")
2	R65359	Seal	195763M1	TE20, TEA20, TEF20, TO20, TO30 (R00280 Conversion Shaft)
3	R18056	Bearing #6206 (30mm x 62mm x 16mm)	GA001773	TE20, TEA20, TEF20, TO20, TO30 Fits R00280 Conversion Kit
4	R55112	Snap Ring (62mm Internal)		Fits R00280 Conversion Kit
5	R02882	Snap Ring (30mm External)		Fits R00280 Conversion Kit
6	R61322	Gasket	181431M1	TE20, TEA20, TEF20, TO20, TO30
7	R00277	P.T.O. Shaft (1 3/8")	181204M92	TO35, FE35, F40
8	R40801	Bushing	180461M1	TO35, FE35, F40
9	R40761	Needle Bearing	195453M1	TO35, FE35, F40
10	R41622	Snap Ring (1 5/8"ID x 3/32")	195284M1	TO35, FE35, F40
11	R40804	Bearing w/ Snap Ring (45mm x 75mm x 16mm)	195498M1	TO35, FE35, F40
12	R40806	Seal (1.75" x R687" x .75")	1860325M1 195506M1	TO35, FE35, F40
13	R41989	Housing - Seal Retainer	180465M1	TO35, FE35, F40
14	R04585	O-Ring	195522M1	TO35, FE35, F40
15	R41987	P.T.O. Cap	180313M1	TO35, F40
16	R60456	P.T.O. Cap		Fits R00280 Conversion Kit
17	R41310	P.T.O. Cap (w/ 1 1/8" Shaft)	181181M1	TE20, TEA20, TEF20, TO20, TO30
18	R00253	P.T.O. Adaptor w/ Roll Pin (Length 2 3/16" - 56mm)		
19	R15451	Over Running (A=1 1/8" B=1 3/8")		
19	R15514	Over Running (A=1 3/8" B=1 3/8")		
19	R13376	Over Running (A=1 1/8" B=1 1/8")		
19	R13375	Over Running (A=1 3/8" B=1 1/8")		
20	R60544	Belt Pulley, 6 Spline (1 3/8")	899622M91	